

Parkinson's Progression Markers Initiative (PPMI)

Biospecimen Processing Maps Manual

Study processing maps outlining the path each sample will take through the acquisition, aliquoting, storage and shipping processes from the clinical sites to the study biorepository and, eventually, to the researcher.



Table of Contents

Biospecimen Collection and Processing Background 3

Biospecimen Collection PPMI 1.04-7

- PPMI PBMC Processing Map
- PPMI Fibroblast and iPSCs Processing NYSCF
- PPMI Fibroblast and iPSCs Processing CDI
- PPMI PPMI DNA (Whole Blood and Buffy Coat) Processing

Biospecimen Collection PPMI 1.0 and PPMI 2.0.....8-13

- PPMI RNA Processing Map
- PPMI Serum Processing Map
- PPMI Plasma Processing Map
- PPMI Whole Blood Processing Map
- PPMI Urine Processing Map
- PPMI CSF Processing Map

Biospecimen Collection PPMI 2.0 14-15

- PPMI Skin Tissue Processing
- PPMI PPMI DNA (Whole Blood and Buffy Coat) Processing

Biospecimen Collection and Processing Background

The PPMI biospecimen collection ranges in many samples types. As the PPMI study has continued and specimen analysis expanded, so has the need to update these collections. Most biospecimens have continued from the initial PPMI collection into the expanded phase (RNA, plasma, serum, buffy coat, urine and CSF), while other specimens would have only been collected during the initial phase of the study (cell lines and PBMCs). For further information on cell lines, please refer to the *Cell Lines Manual of Procedures*.

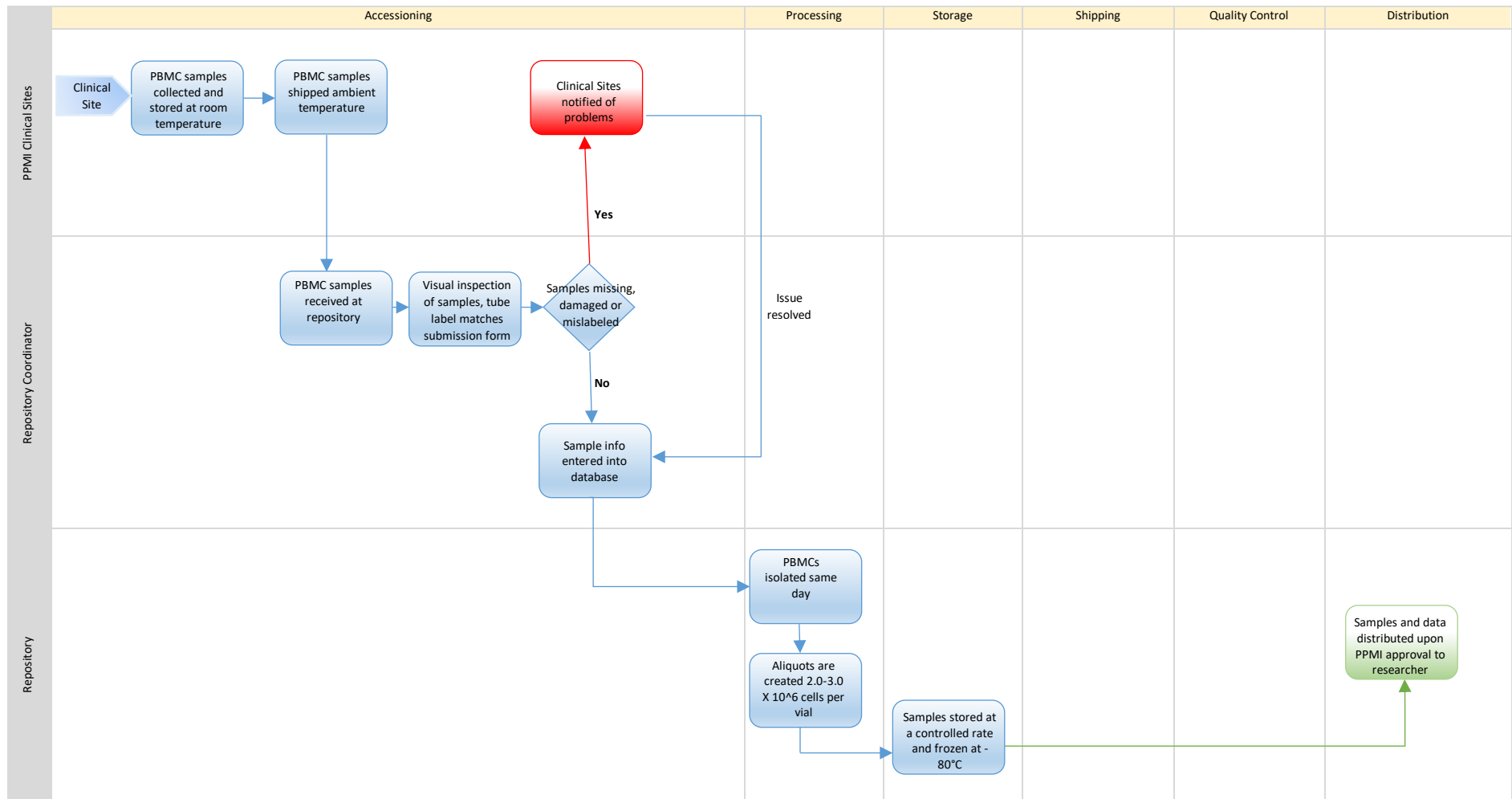
The newest addition to biospecimen collection and processing is skin biopsy tissue. PPMI scientists continue to explore the addition of other samples types that may be instrumental in biomarker research.

Furthermore, the biorepository at Indiana University oversees all DNA fingerprinting and analysis (previously, DNA was sent to LGC, formally KBioscience). The updated process has been implemented for whole blood DNA samples received at the PPMI biorepositories in Tel Aviv Sourasky Hospital in Israel, BioRep in Milan, Italy, and the Indiana University Genetics Biobank.

The following processing maps are a guide to how samples are processed once they are received by the biorepository labs.

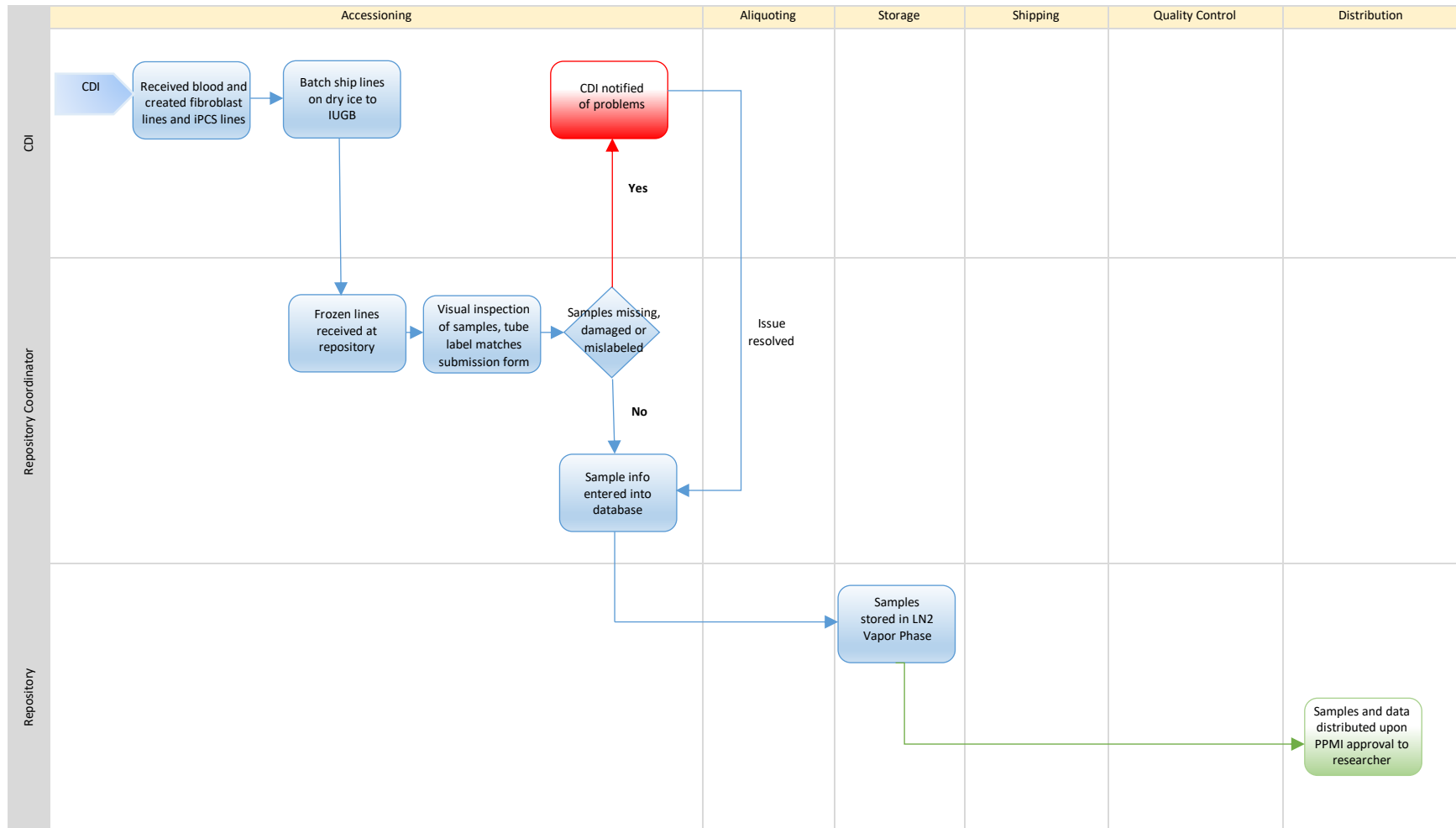
PPMI PBMC Processing

Modified on September 29, 2016



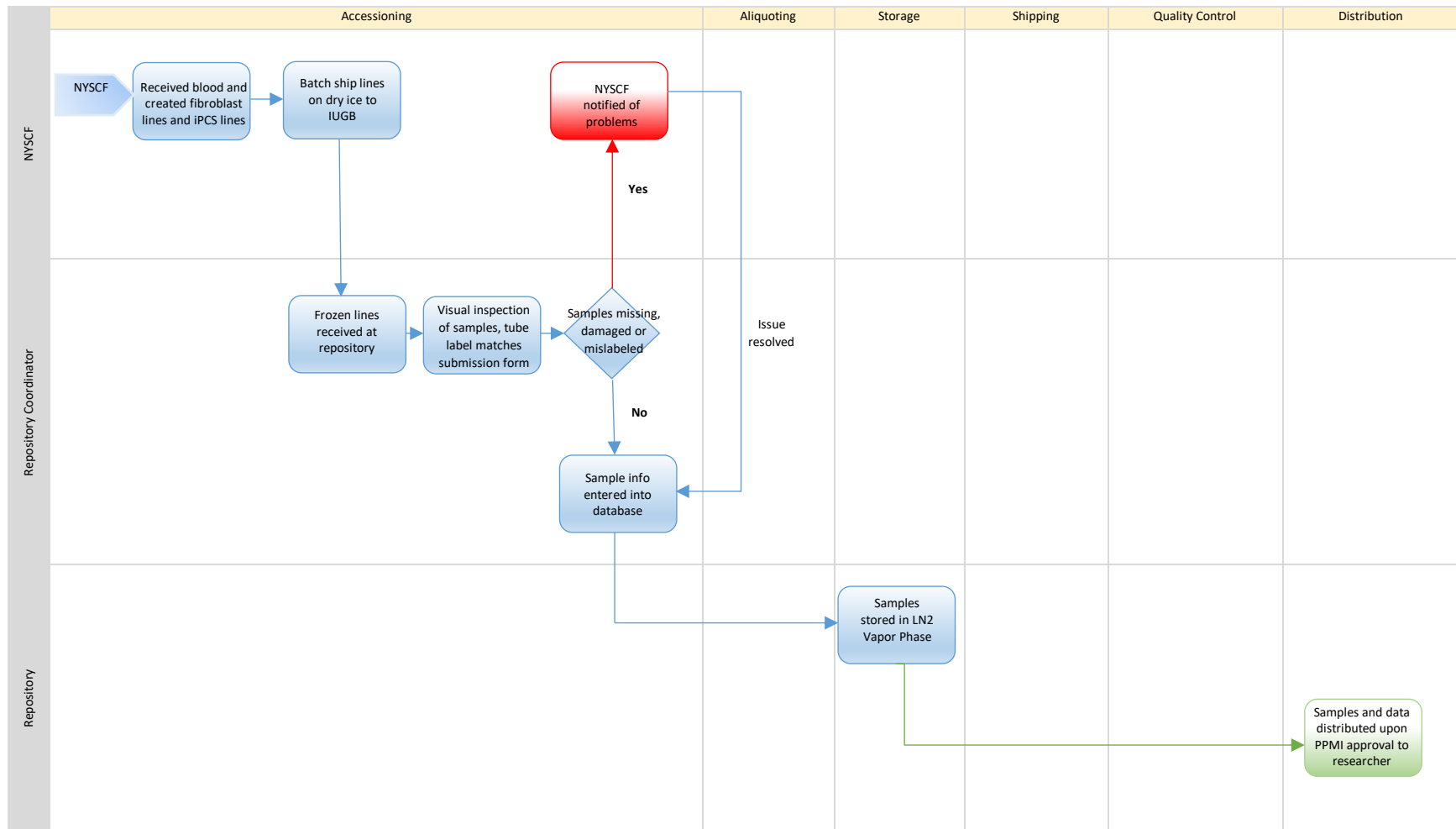
PPMI Fibroblast and iPSCs Processing from CDI

Modified on September 29, 2016



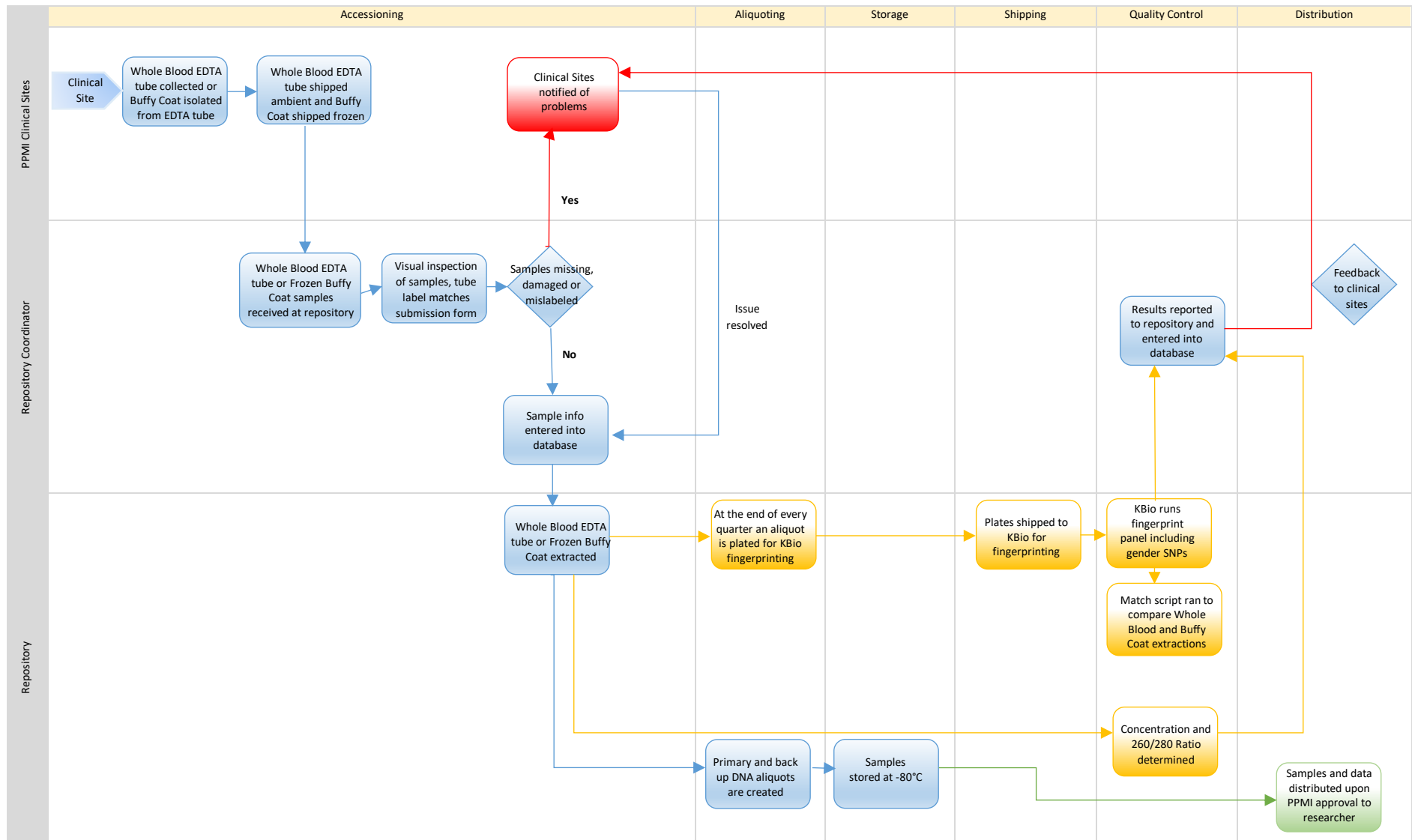
PPMI Fibroblast and iPSCs Processing from NYSCF

Modified on September 29, 2016



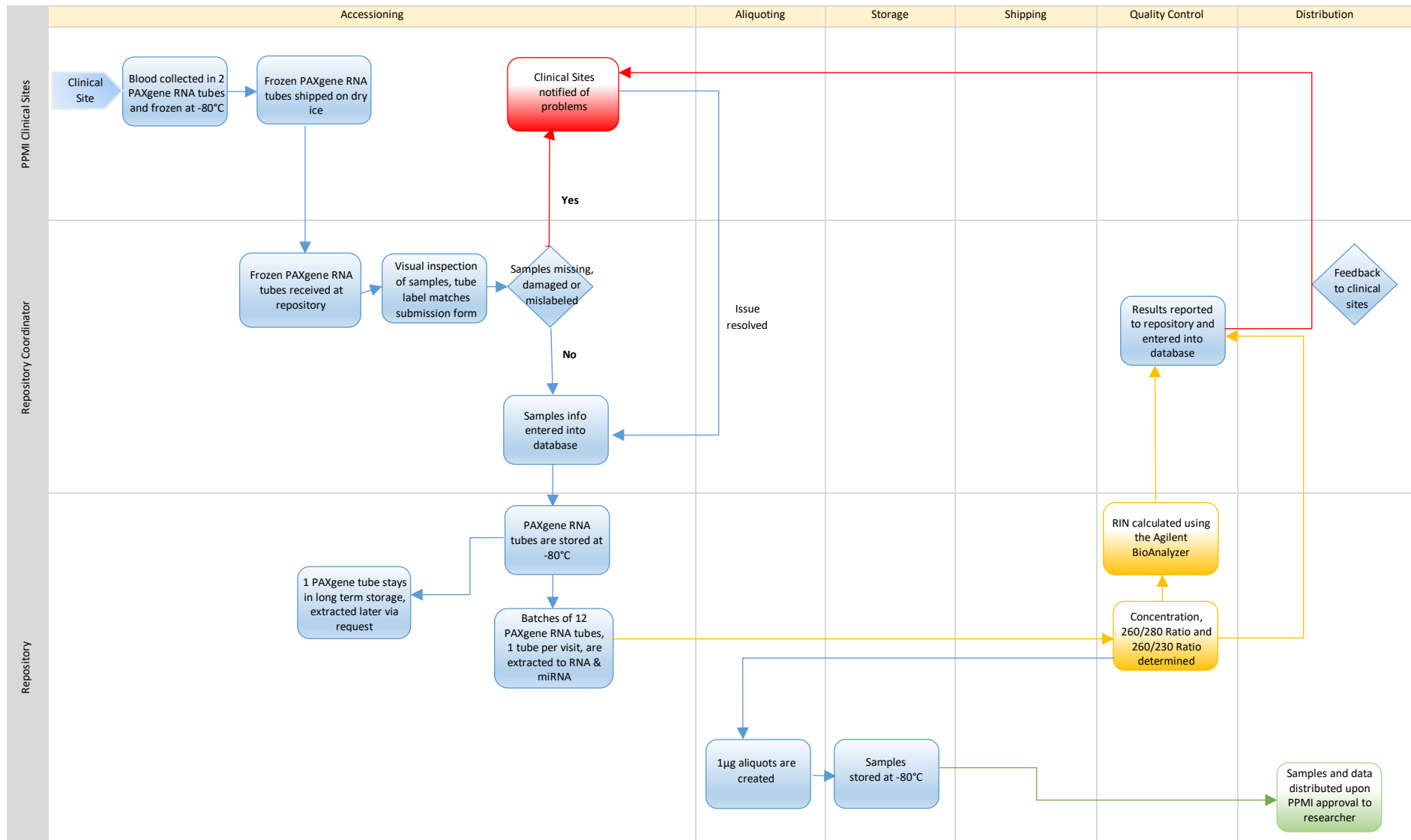
PPMI DNA (Whole Blood and Buffy Coat) Processing

Modified on April 15, 2015



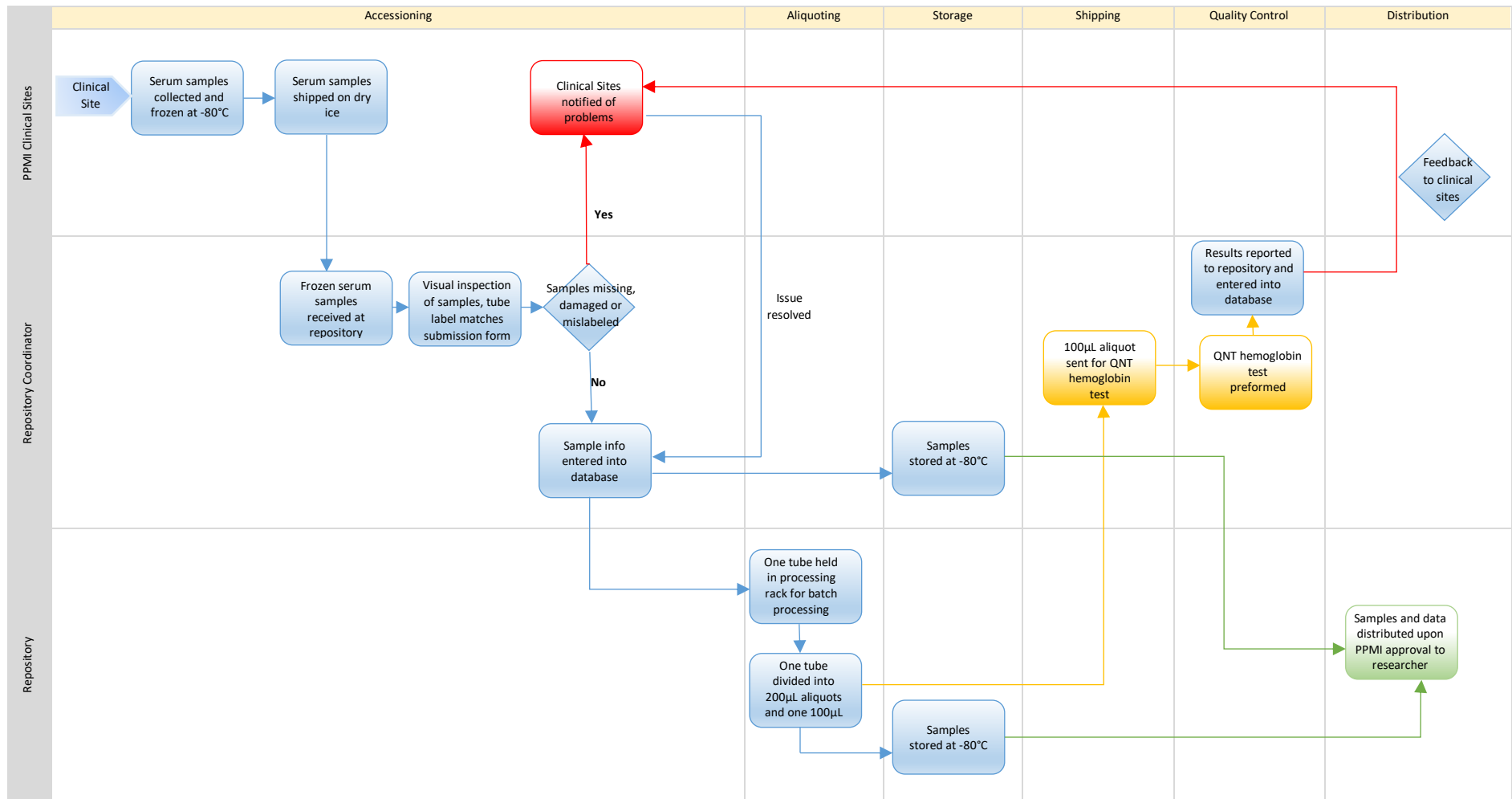
PPMI RNA Processing

Modified on March 7, 2016



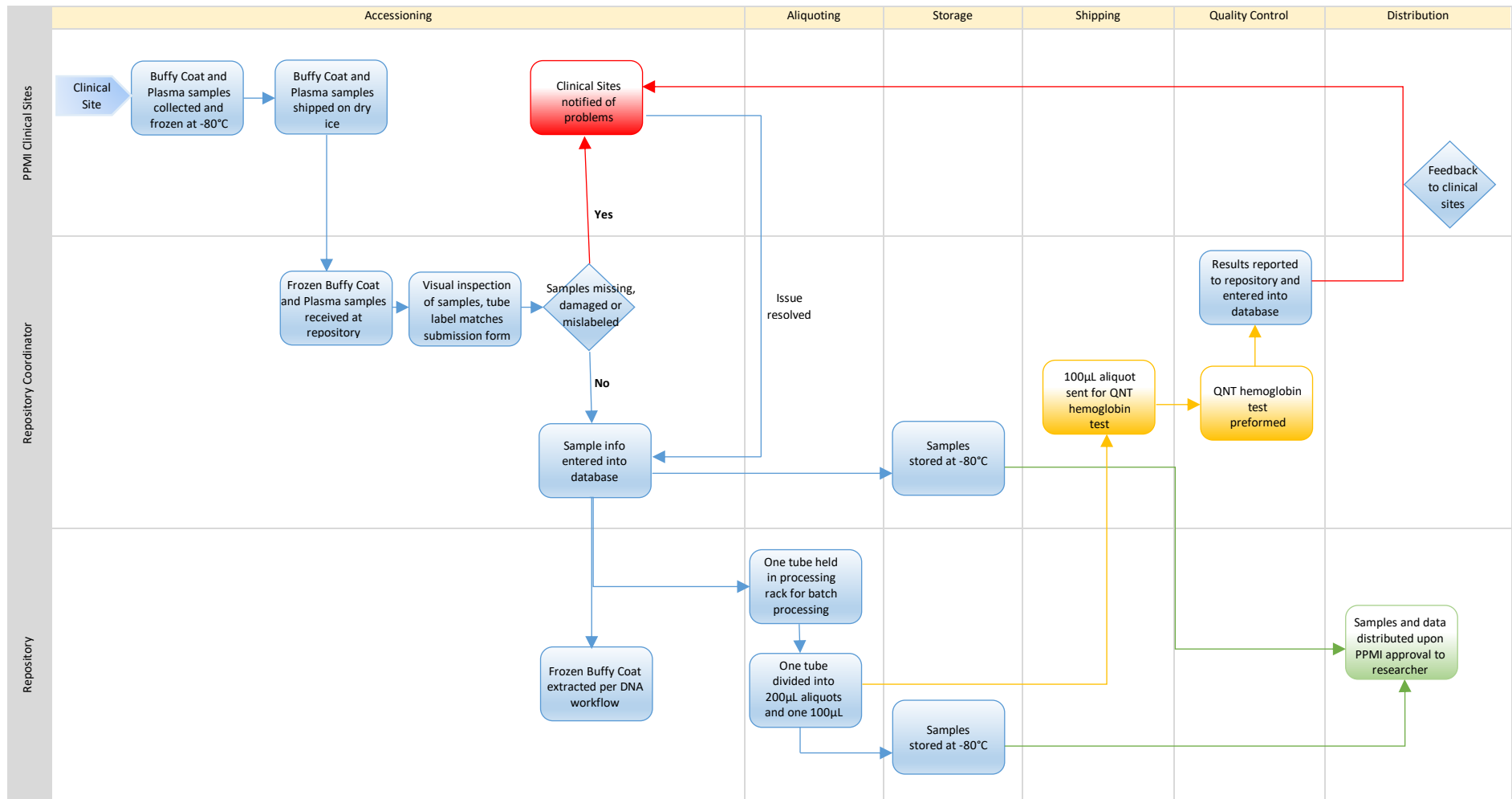
PPMI Serum Processing

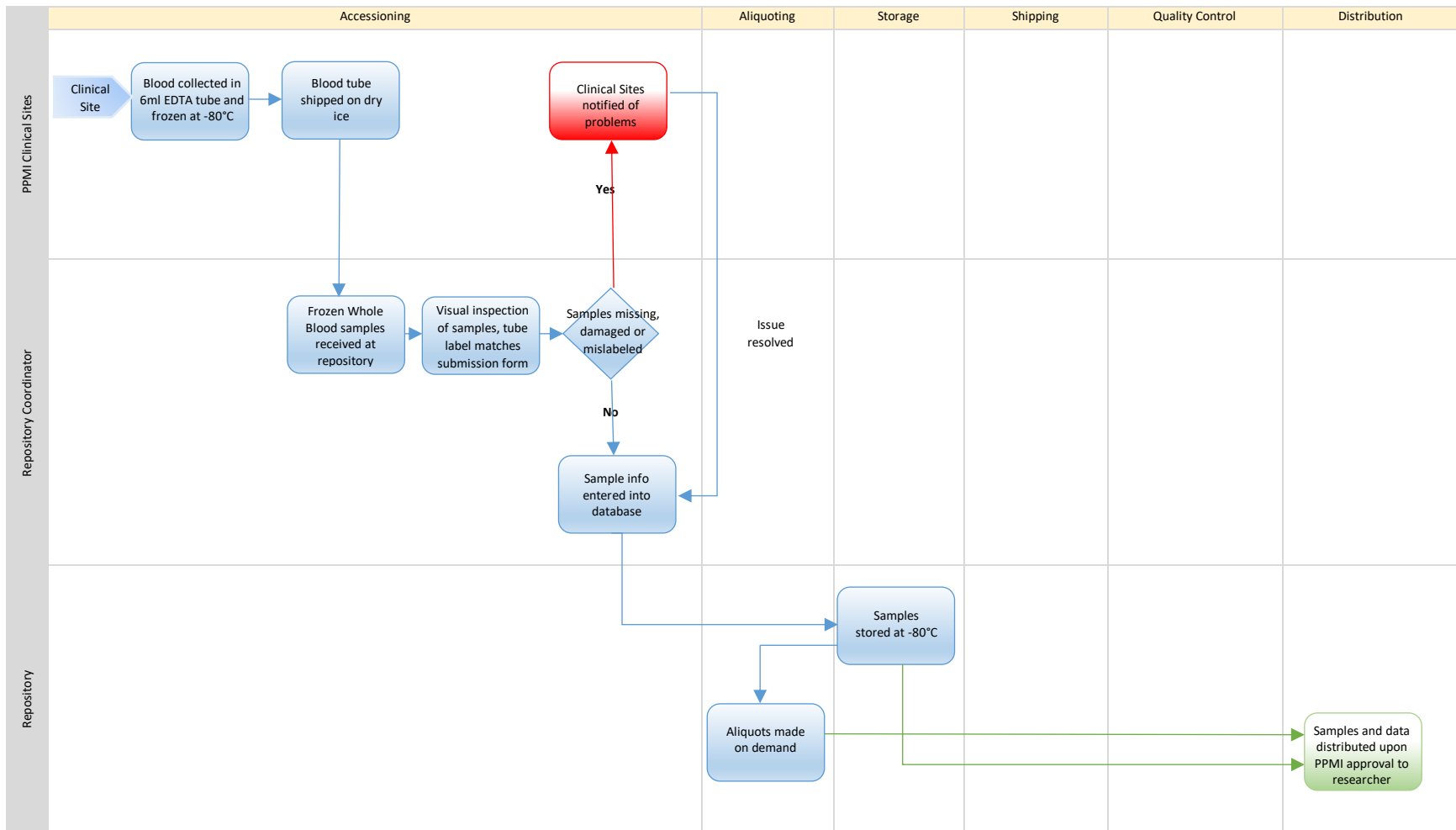
Modified on June 2, 2015



PPMI Plasma Processing

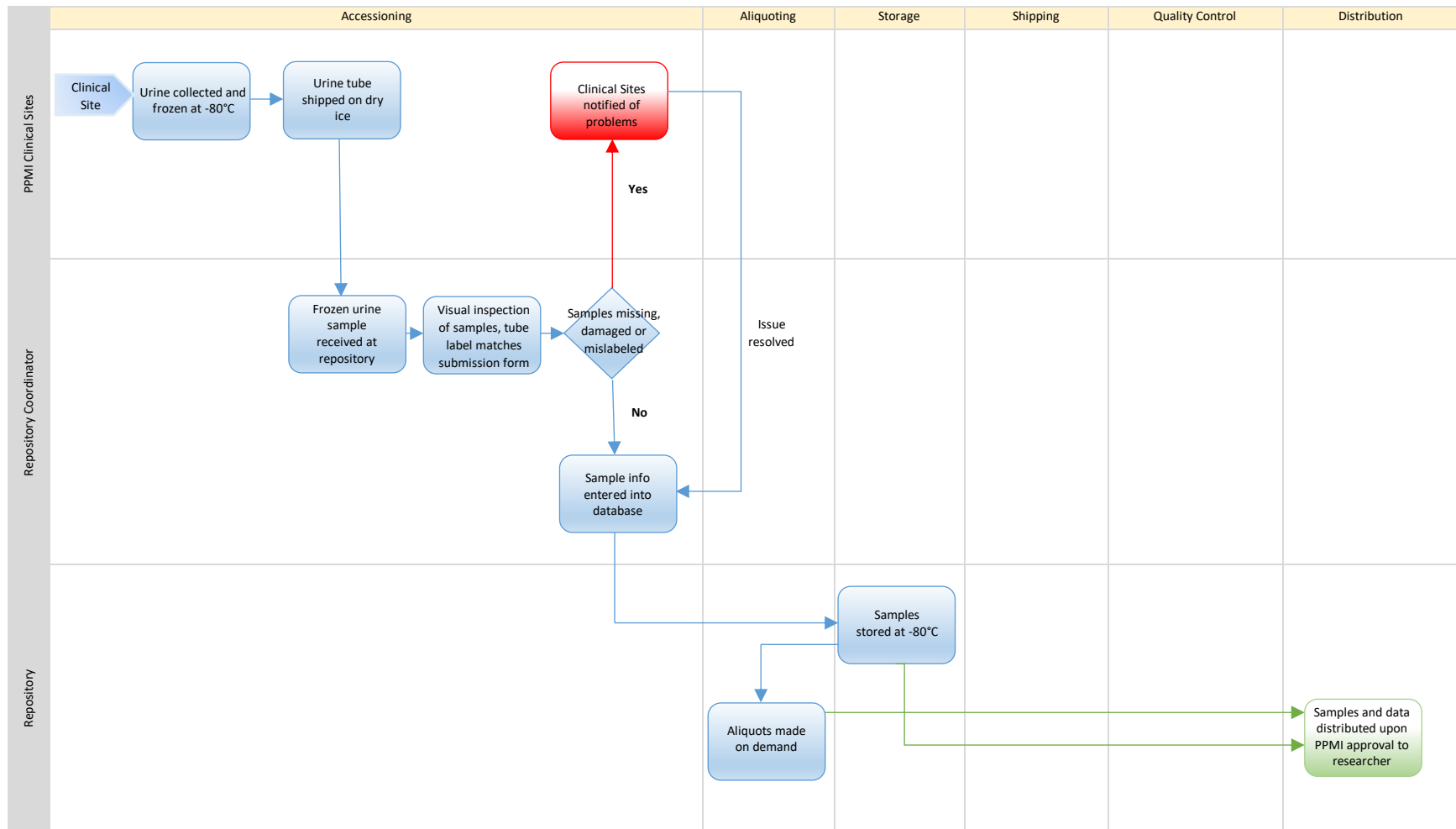
Modified on June 2, 2015





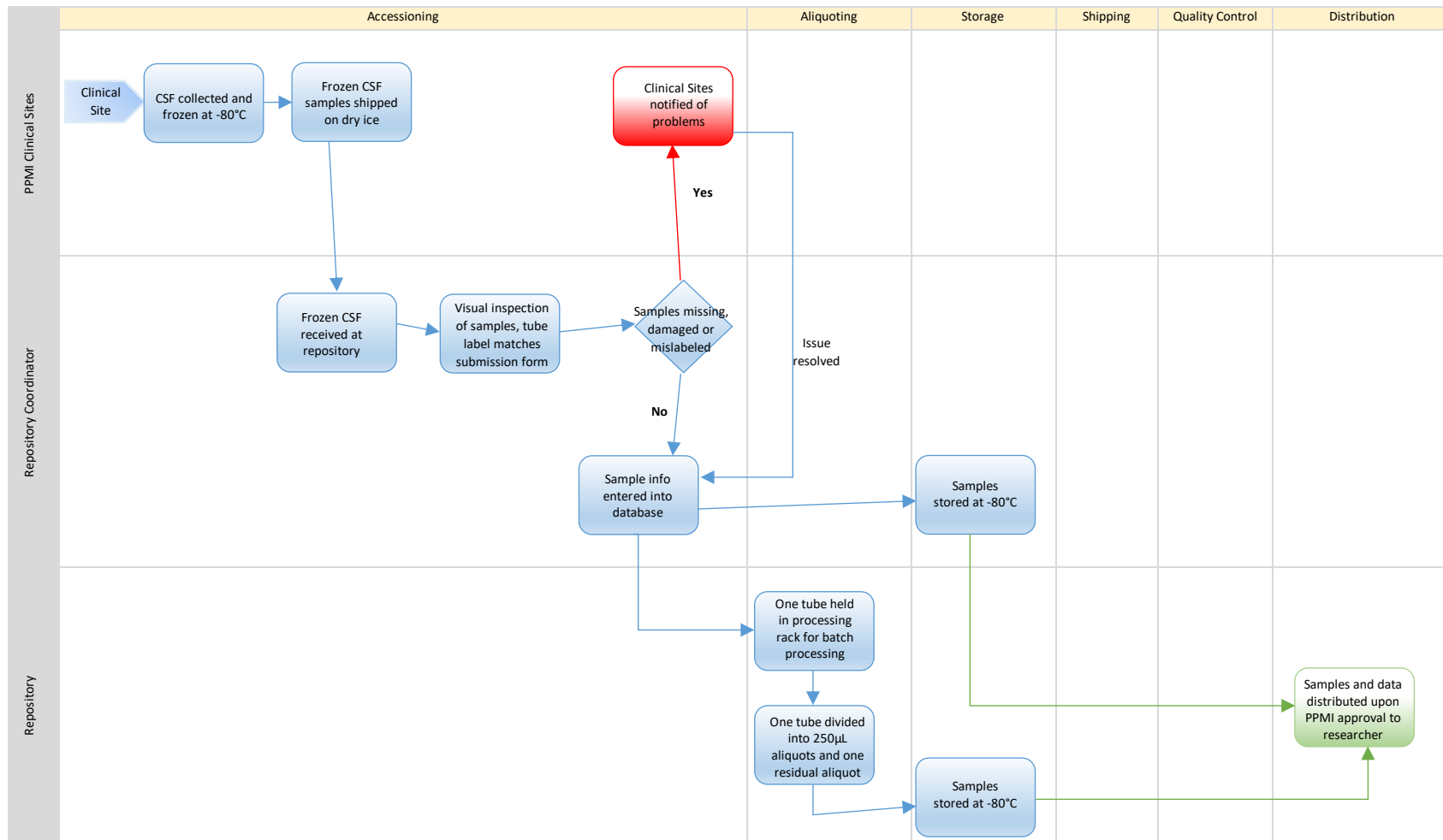
PPMI Urine Processing

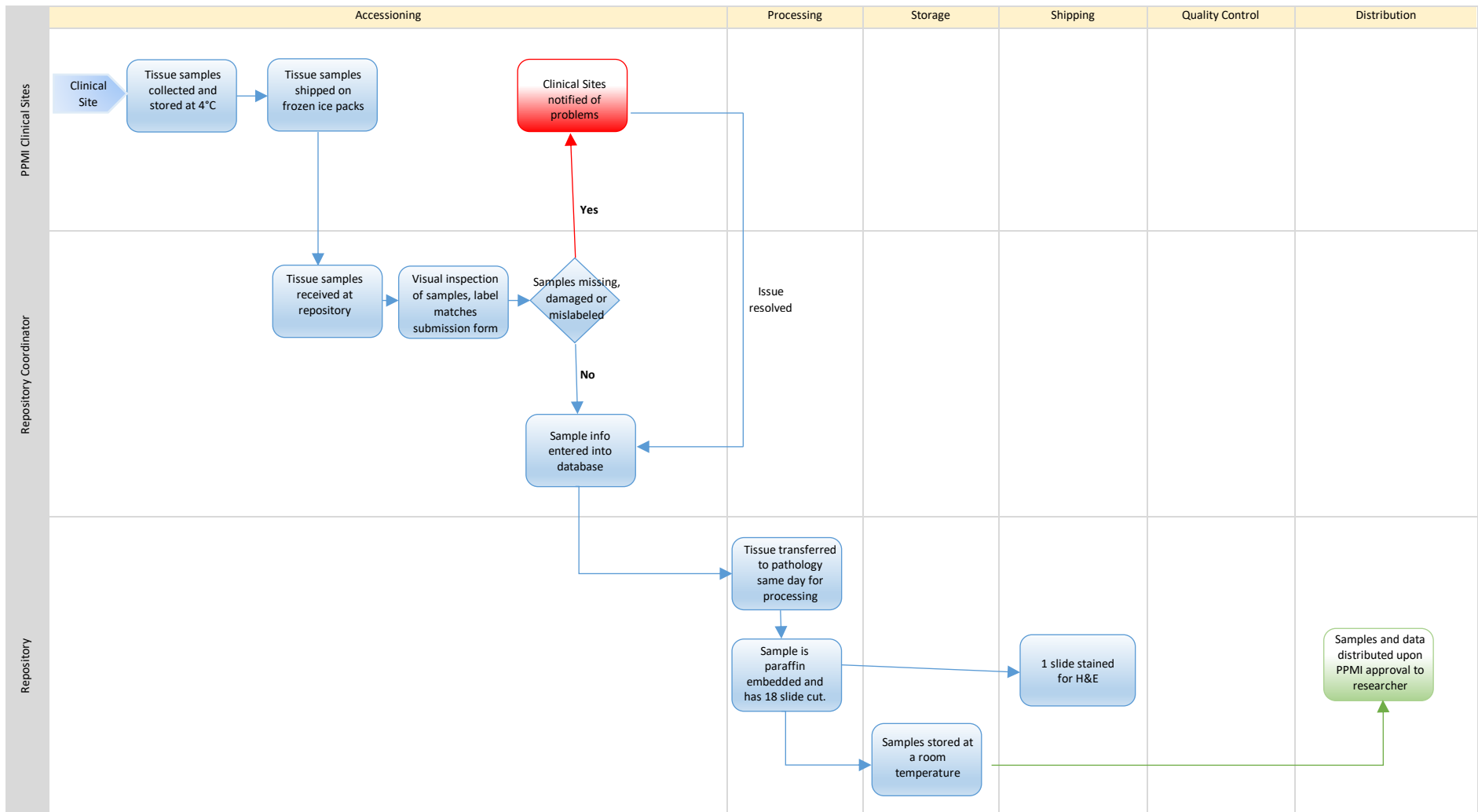
Modified on January 9, 2015



PPMI CSF Processing

Modified on April 30, 2015





PPMI DNA (Whole Blood and Buffy Coat) Processing

Modified on August 12, 2021

